

**Corners to be Indexed**

NE 4-106-42  
 N1/4 4-106-42  
 NE 5-106-42

STATE OF MINNESOTA, }  
 COUNTY OF MURRAY, } ss.

I hereby certify that the within Instrument was filed in this office for record on the 13<sup>TH</sup> day of DECEMBER A.D. 20 19 at 9:00 o'clock A. M, and was duly recorded as Document No. \_\_\_\_\_

I hereby certify that this document and the data contained herein was prepared by me or under my direct supervision.

*[Signature]*

Daniel L. Bueltel  
 License No. 43844

6/28/2019  
 Date

*[Signature]*  
 Evelyn C. Larson  
 County Recorder

**CERTIFICATE OF LOCATION OF GOVERNMENT CORNER**

Land survey monuments situated in Section 4, Township 106, Range 42, 5TH P.M.

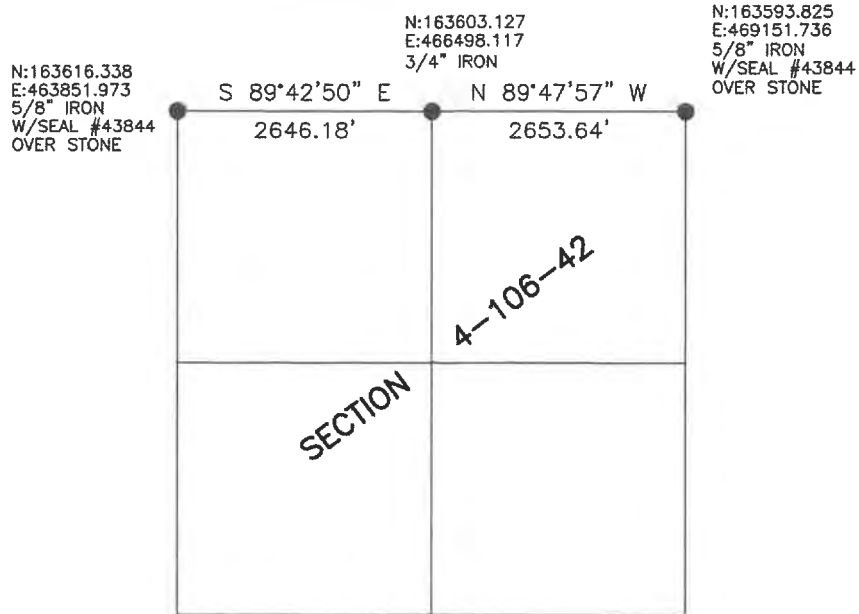
STATE OF MINNESOTA, County of MURRAY

**STATEMENT OF EVIDENCE:**

No Date - Original Government Survey  
 1902 - J.W. Woolstiencroft shows stones at the N1/4 and NE corners of Sec 4-106-42.  
 1948 - Murray County Highway Department found stone at N1/4 corner.  
 1957 - Murray County Highway Department found stones at N1/4 and NE corners of Section.



- FOUND MONUMENT
- SET MONUMENT



Minnesota State Plane Coordinate  
 System Murray County Datum NAD83 (1996)

## Statement of Evidence

NE 4-106-42

(No Date) J.W. Myers did the original survey of the north line of the township.

On May 9, 1902, J.W. Woolstiencroft shows a 16"x14"x30" grey stone at the corner.

On June 25, 1902, J.W. Woolstiencroft found a stone at the corner.

On September 7, 1957, the Murray County Highway Department set a 2"x2" hub over stone.

On June 19, 2015, the Murray County Highway Department was unable to locate the corner.

On June 12, 2019, Bueltel-Moseng Land Surveying dug with a backhoe and found a stone at the corner. We set a 5/8" iron with seal #43844 over the stone.

N1/4 4-106-42

(No Date) J.W. Myers did the original survey of the north line of the township.

On June 25, 1902, J.W. Woolstiencroft shows a 4x10x22 grey stone at the corner.

On June 30, 1948, the Murray County Highway Department found a field stone at the corner.

In September, 1957, the Murray County Highway Department found a field stone at the corner and set a 3/4" iron over it.

On June 19, 2015, the Murray County Highway Department found a 3/4" iron at the corner.

On June 26, 2019, Bueltel-Moseng Land Surveying found a 3/4" iron at the corner.

NE 5-106-42

(No Date) J.W. Myers did the original survey of the north line of the township.

On April 10, 1902, J.W. Woolstiencroft shows 2 stones in grade east of track.

On April 6, 1931, the Murray County Land Surveyor found a stone at the corner.

In September, 1957, the Murray County Highway Department found a field stone at the corner.

On November 5, 1996, the Murray County Highway Department placed a steel pin on the north side of the stone.

On July 24, 2012, the Murray County Highway Department found an iron at the corner.

On June 15, 2015, the Murray County Highway Department found a 3/8" iron at the corner.

On June 12, 2019, Bueltel-Moseng Land Surveying dug with a backhoe and found an iron next to a stone. We removed the monuments and continued digging. We found another stone below them. We left this stone in place and set a 5/8" iron with seal #43844 over the stone.